

**valmont<sup>^</sup>**

STRUCTUReS

# SMALL CELL SOLUTIONS

Valmont Structures Provides Small Cell Pole Solutions  
for All Your Applications and Local Needs



**valmont** <sup>^</sup>

STRUCTURES

## VALMONT BY THE NUMBERS



- 2.7** Billion dollars in sales
- 6** Continents on which we operate
- 86** Manufacturing facilities around the world
- 23** Countries we have plants
- 10** Thousand employees globally
- 23** Distinct Valmont Brands

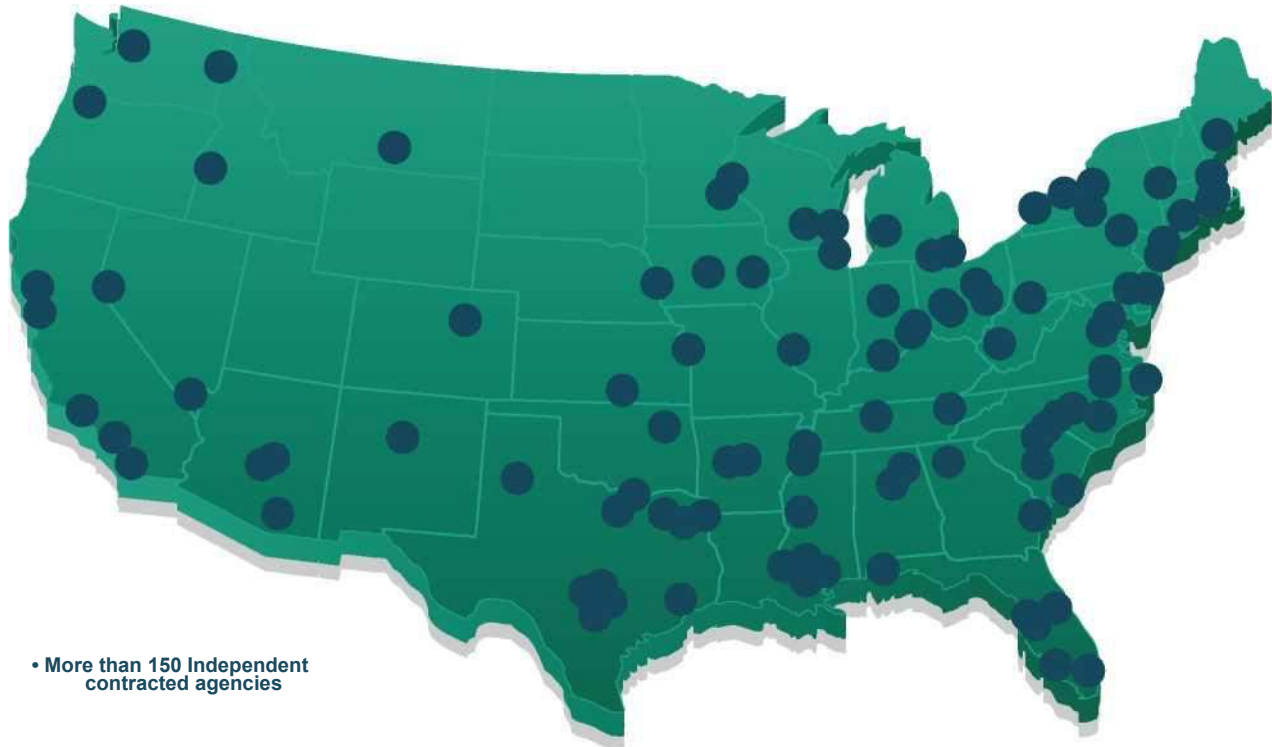
# DEVELOPING SOLUTIONS



Valmont's structures touch millions of lives around the world, day & night. From stop lights to street lamps, communication towers to small cell poles, we provide a sense of safety & connectedness people depend on.

- Unmatched Engineering leadership and design expertise. We estimate a market share of greater than 50% of light poles installed in the US marketplace.
- Largest catalog of pole shafts, arms, bases, and accessories designed to meet local aesthetic requirements
- Detailed and specific knowledge of local municipal needs and specifications

# A TRUSTED PARTNER



With local expertise across the country, Valmont is a trusted partner to facilitate deployment of your small cell poles. We can help you navigate through the red-tape at municipalities, highway departments, and utility companies.

- For nearly seventy years, Valmont has developed enduring specifications for every major municipality and utility across the country. This results in Valmont being a specified vendor in every metropolitan area.
- Valmont's agent network is a national network of technical salespeople which offers expert and immediate responses and contacts at the local level for municipalities, utilities, & DOTs.
- Valmont has multiple specialists in each major market to cover transportation, utility lighting, and commercial developments

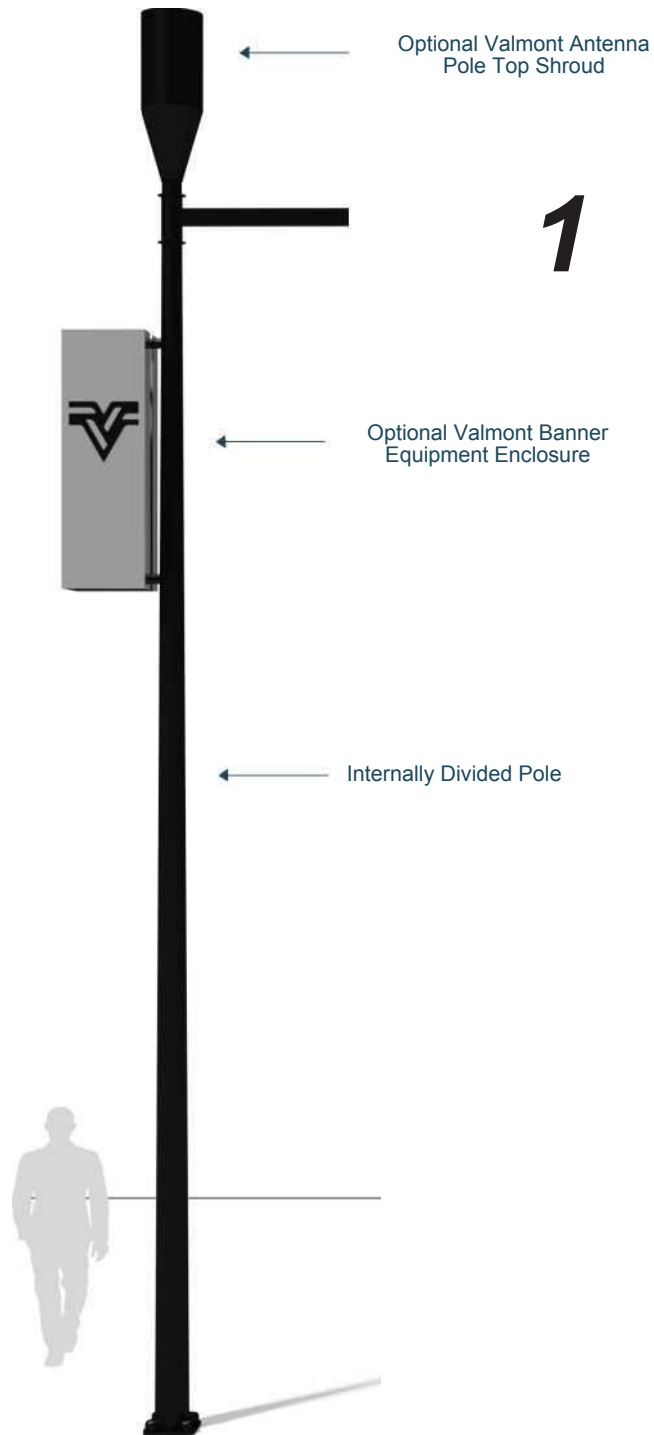
# DUAL USE POLE SOLUTIONS



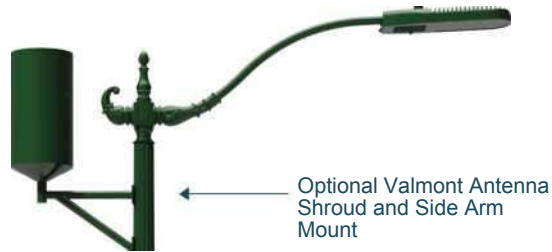
Valmont provides small cell solutions for outdoor coverage using the same materials and design criteria found in our lighting structures.

- With our vast catalog of Valmont light poles, we are best positioned to match and convert your needs into new small cell sites.
- When beginning a custom project, our technical team will carefully consider all project specifications. Our recommendations are unique and based on local permitting and zoning requirements, pole size and location.

# DUAL USE POLE SOLUTIONS



# DUAL USE POLE SOLUTIONS



Internally Divided Pole

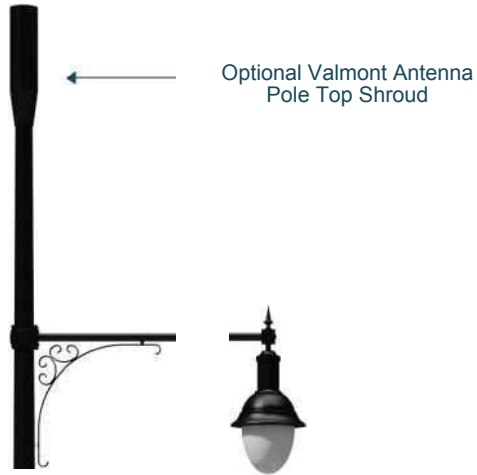


# DUAL USE POLE SOLUTIONS

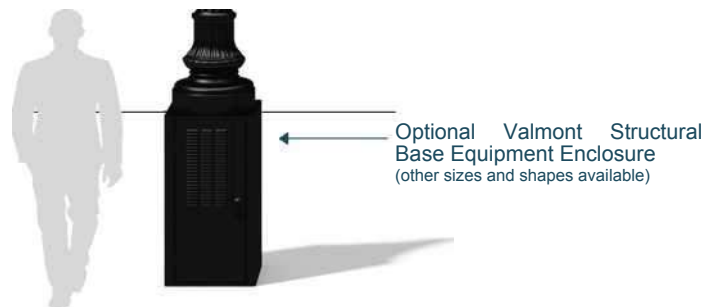




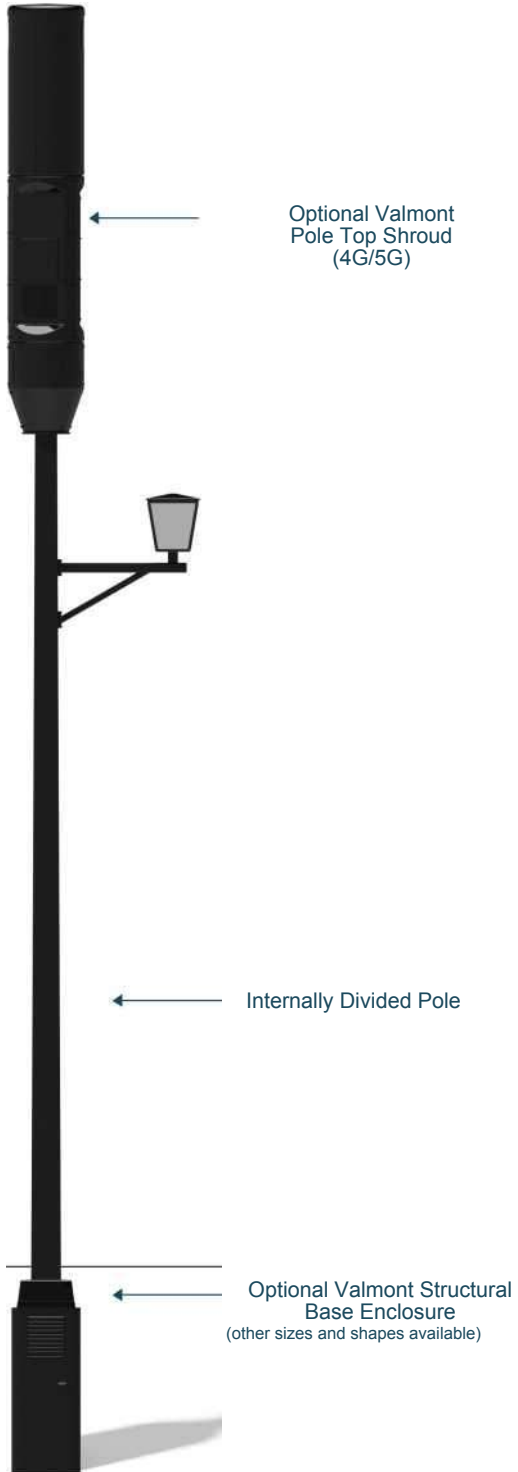
# DUAL USE POLE SOLUTIONS



Internally Divided Pole



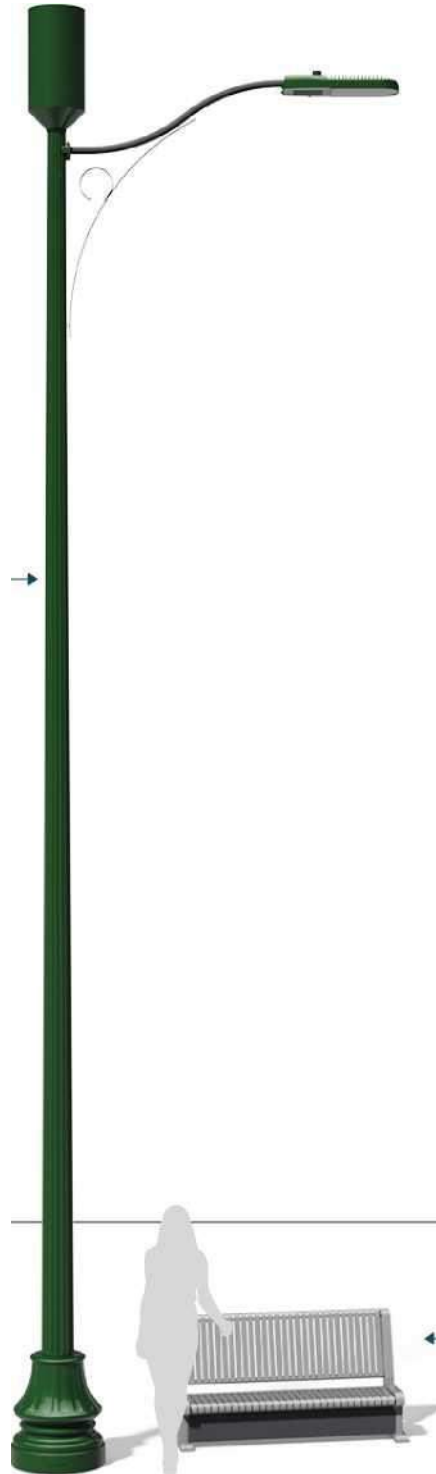
# DUAL USE POLE SOLUTIONS



# DUAL USE POLE SOLUTIONS

Valmont Antenna Pole Top - ▶  
Shroud

Internally Divided Pole →



Equipment in  
Sidewalk Mounted  
Cabinet - by others ←

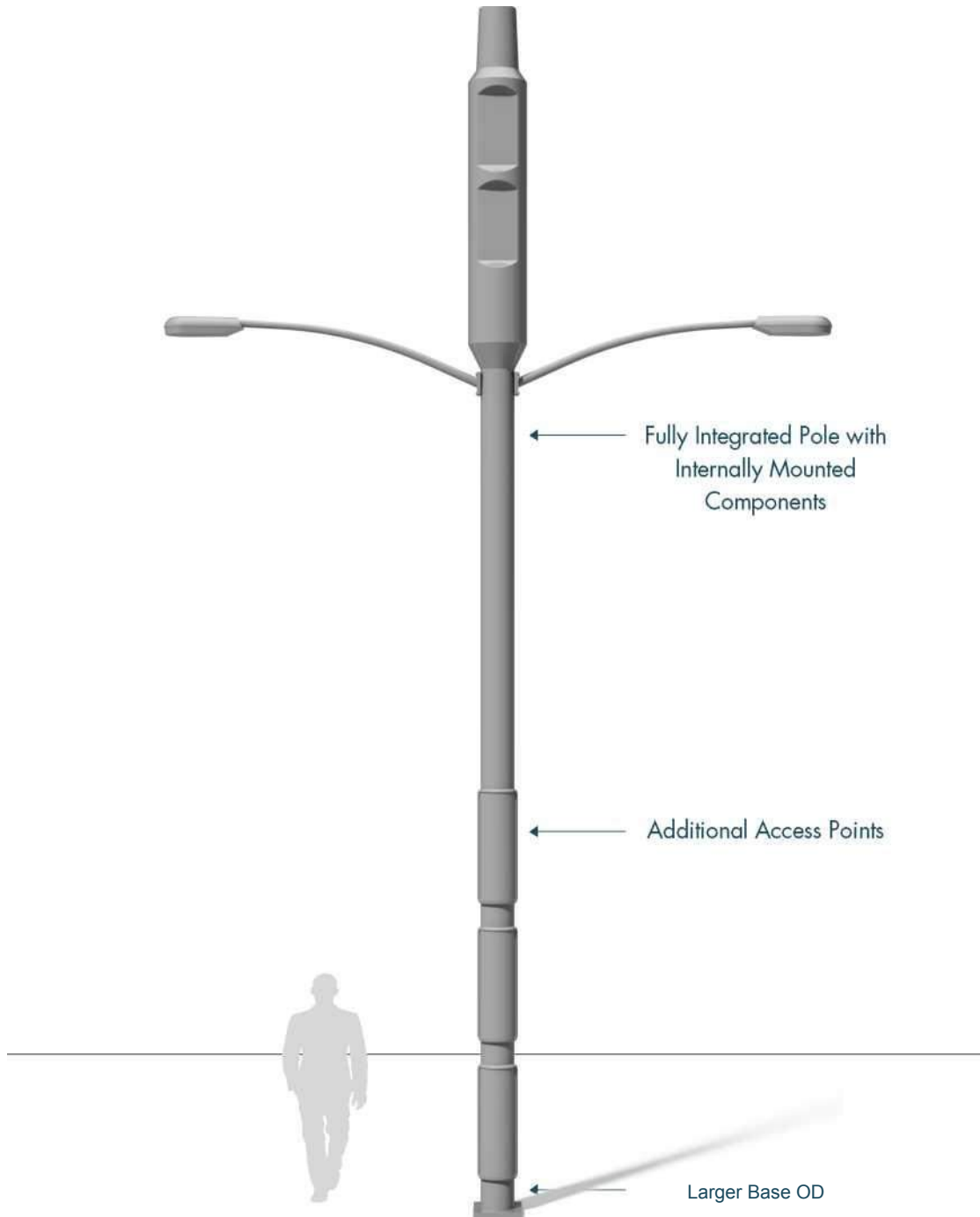
# SINGLE USE POLE SOLUTION



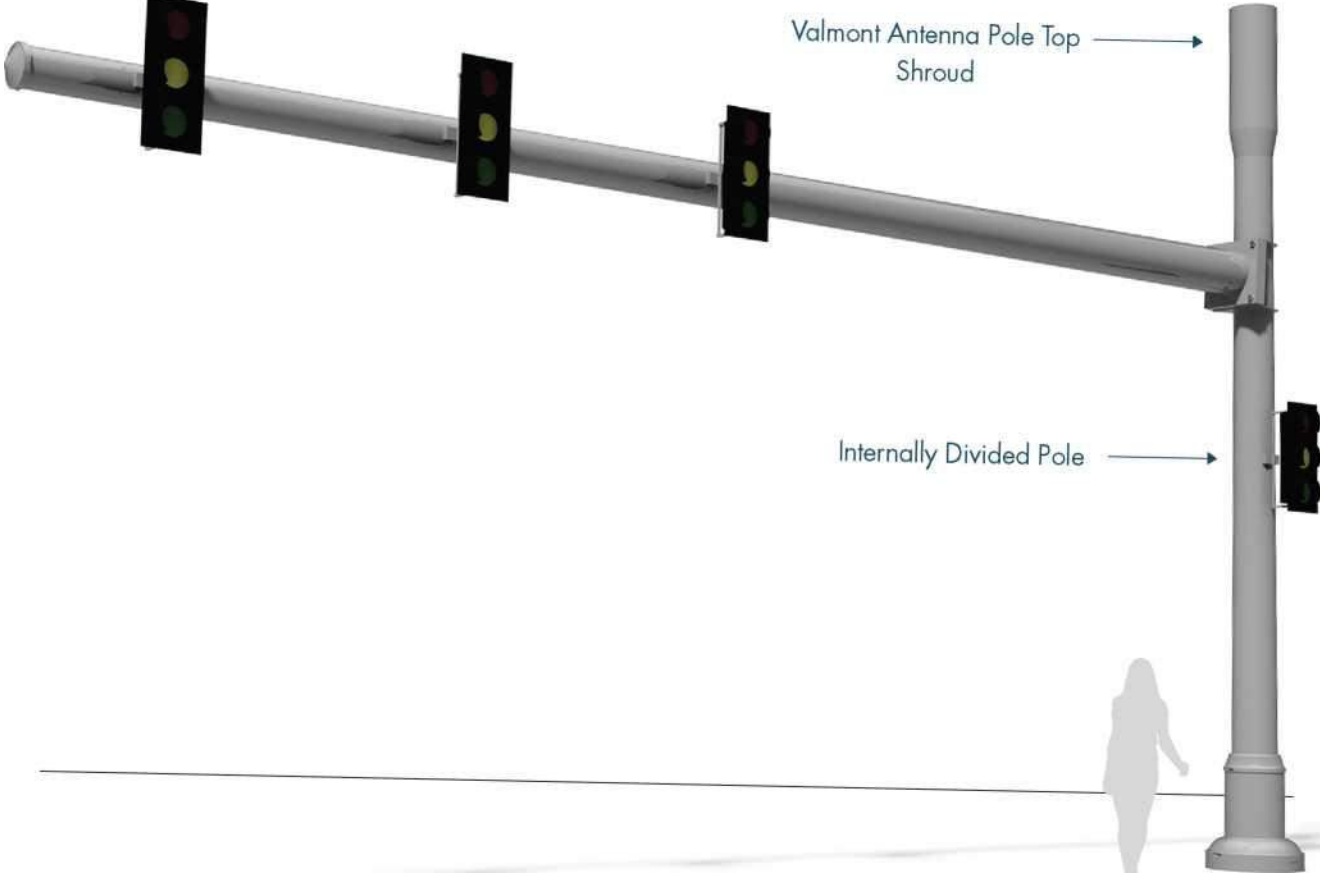
Optional Valmont  
Pole Top Shroud  
(4G/5G)

← Internally Divided Pole

# CONCEALED POLE SOLUTION



# TRAFFIC POLE SOLUTION



# EXISTING POLE SOLUTION

Valmont Antenna Pole Top ->  
Shroud



Valmont .  
Equipment Enclosure

R

G

# STANDARD VALMONT OPTIONS



With an extensive catalog of standard items, finishes, and accessories, Valmont can provide an aesthetic that meets any project requirement.

- Valmont has a large catalog of decorative items that have been developed and tested to meet the engineering and aesthetic needs of our customers.
- Beyond our catalog, with a large, in-house design team we can develop custom items on a per project basis.



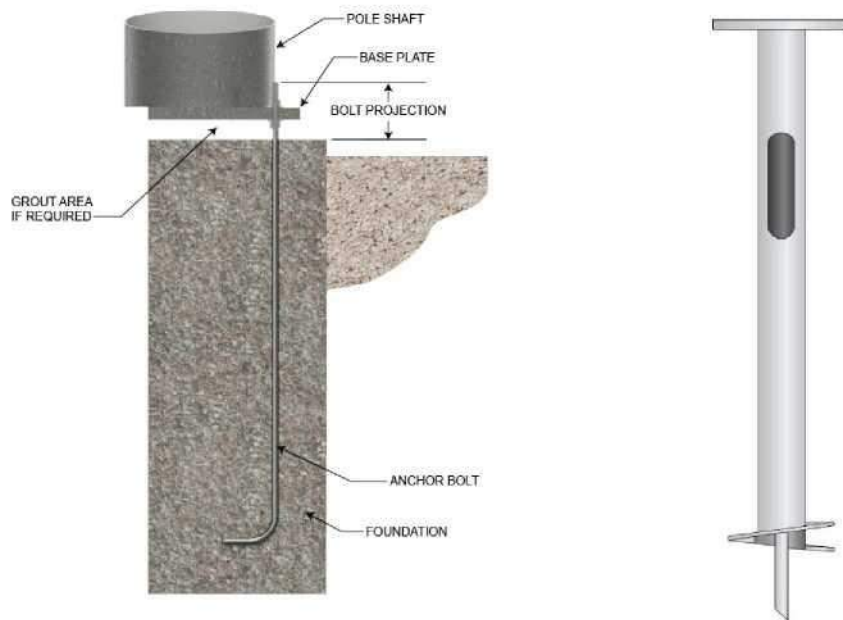
# VALMONT FINISHES



Valmont is uniquely qualified to offer a broad range of finishes, which serve to extend the service life and visual appeal of your structures. Whether your specification calls for an anti-corrosive finish or a specialty paint, Valmont can provide you with the best finishes in the industry.

- Our extensive in-house capabilities, combined, with our complete line of finishing and inspection services, allow for superior quality control and the best lead times in the industry.
- We have both galvanizing and powder coat facilities on-site at our pole plants.  
All of our poles are galvanized to ensure long term corrosion resistance. Powder Coat painting is offered as an option and applied over the galvanizing.
- Valmont's standard powder coat finish is a Urethane Polyester Powder, spec F-283. An optional, 10 year, anti-graffiti Fluoropolymer paint is available, spec. F580.
- Valmont standard powder paint colors are: Black(BK), Dark Bronze(DB), Medium Bronze(MB), White(WH), Bronze(CB), Dark Green(DG), Hunter Green(HG), Light Gray(LG), Sandstone(ST), and Slate Gray(SG). Custom color match based on City requirements/

# FOUNDATION DESIGNS



Foundation designs are based on localized soil conditions, building codes, structural loading, and seismic and wind conditions. As a result each type of foundation needs to be evaluated for each city and application.

- Valmont has extensive experience with steel structures, foundation design, city/state design requirements, industry standards and installation processes. With Engineers licensed in all 50 states, we can design a foundation that will work for the specific requirements for your area.
- There are several types of pre-fabricated foundations available that Valmont can provide and design.
- Valmont's design team of professional engineers will work with the Verizon deployment team and city public works department to develop the proper solution.

# VALMONT ACCESSORIES

## Antenna Mounts:



Concealed Side Arm

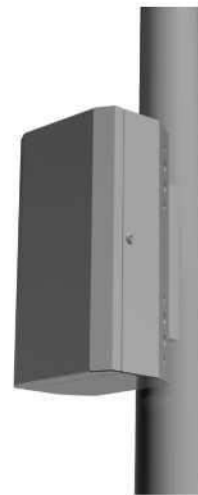


Side Arm

## Pole Mount Enclosures:



Wood Pole Side Mount Cabinet Enclosure



Steel Pole Side Mount Cabinet Enclosure

# VALMONT ACCESSORIES

Adaptive Pole Top Solutions:



Lighting Application



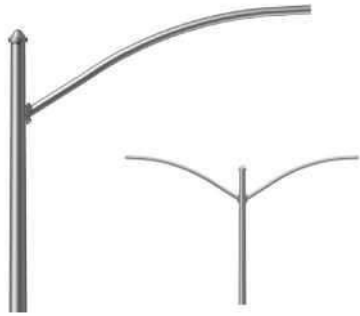
Wood Utility Pole Application



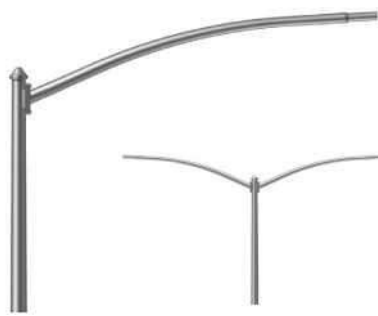
Traffic Application

# VALMONT ACCESSORIES

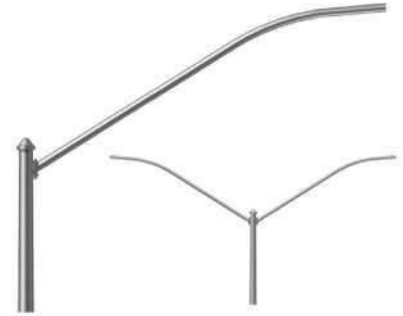
**Arm Options:** Additional options & styles available to meet any aesthetic



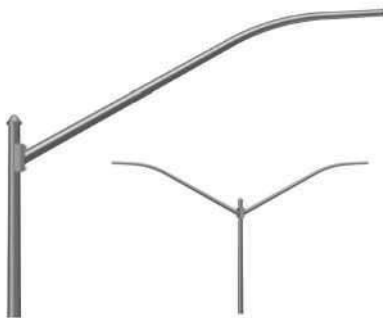
**DS30 Steel Pipe Arm**



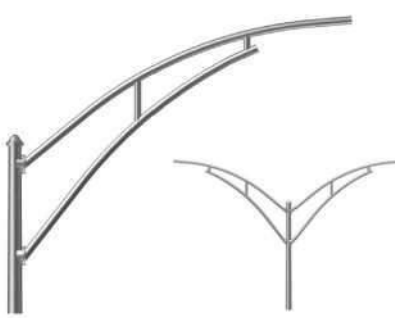
**DS32 Steel Tapered Arm**



**DS50 Steel Pipe Arm**



**DS56 Steel Tapered Arm**



**DS70 Steel Truss Arm**



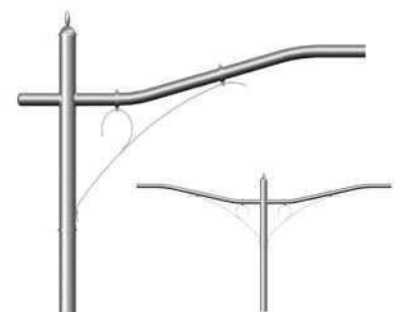
**Alhambra Arm**



**60th Avenue Arm**



**Paramount Arm**



**48th Avenue Arm**

# VALMONT ACCESSORIES

Decorative Base Options: Additional options & styles based on pole style



Huntington



Washington



Classic High



Renaissance High



Contour



Osceola



Round Dart



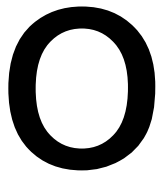
Classic Low



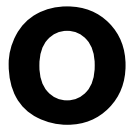
Renaissance Low

# VALMONT ACCESSORIES

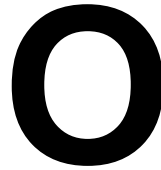
## Pole Fluting Options:



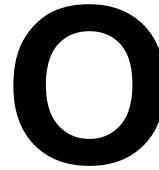
4W



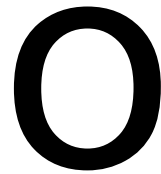
4 SHARP



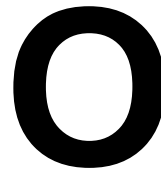
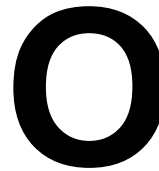
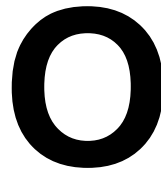
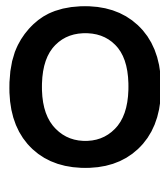
8 FLAT



8V

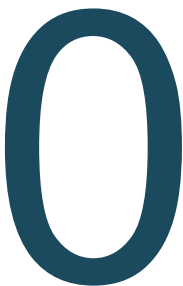


8 GEAR TOOTH

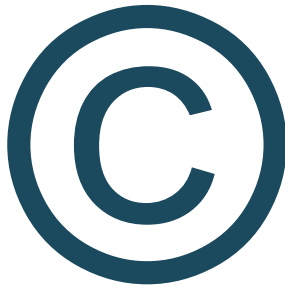


## Pole Dividing Options: For cable/wiring separation

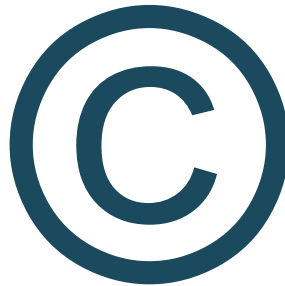
8 SHARP



12 FLAT



12 SHARP



16 FLAT

16 SHARP



Welded  
Channel

Welded  
Channel

Welded  
Channel

Rigid or Flex  
Conduit

Additional information Available at [valmontstructures.com](http://valmontstructures.com) |

800.825.6668

WA

**valmont<sup>^</sup>**

STRUCTURES